



INDEPENDENT X-RAY
QUALITY ASSURANCE

Use with

- Mako
- Piranha
- Cobia
- RTI Scatter Probe



4.6

Ocean next 4.6 | Release highlights

What's New in Ocean Next™ 4.6

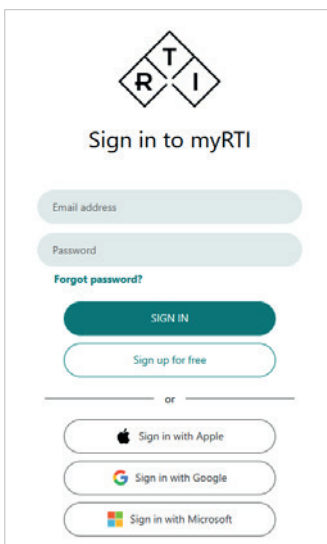
Ocean Next 4.6 is a feature release in the v4 series, supporting all RTI products including RTI Mako, RTI Piranha, RTI Cobia and RTI Scatter Probe.

The Ocean Next 4.6 release introduces several improvements, expanded device support, and usability enhancements. Below are some of the highlights, with many more updates included in the full release.

Major highlights in this release:

Platform & Connectivity

myRTI login (used to activate Ocean Next) now supports Single Sign On (SSO) with your Google, Microsoft, or Apple accounts, with a new, cleaner login window design.



Dose Profiler Updates

New correction factors for the RTI CT Dose Profiler on Canon CT systems (120kV) have been introduced. K-factor and corresponding updates to the user manual.

Mako Enhancements

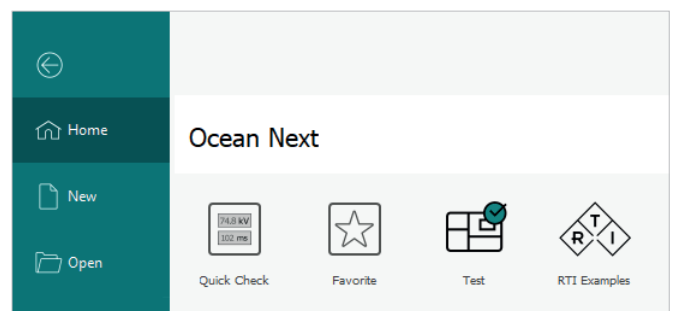
A new Mako firmware version v1.6.4 with the latest updates and performance enhancements.

Improved modality selection for the Mako R/F Probe in Quick Check.

In the new version of Ocean Next, using the R/F Probe no longer requires selection of modality (Rad/Fluoro/CT/Dent) as the Quick Check display will proceed directly to the measure screen, to improve the user experience, making it both faster and more intuitive.

RTI Example Templates

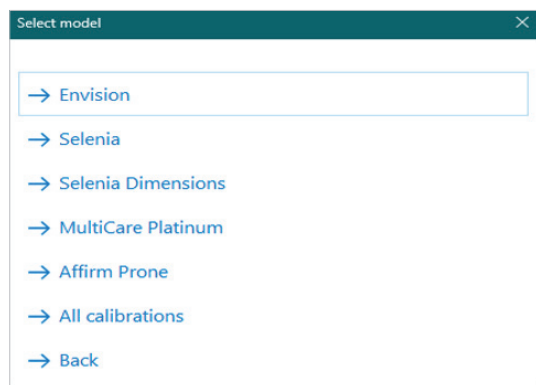
RTI examples added to the Ocean Next homepage for even faster usability and accessibility.



Previous highlights in the 4.5 release:

Hologic Envision Mammography system

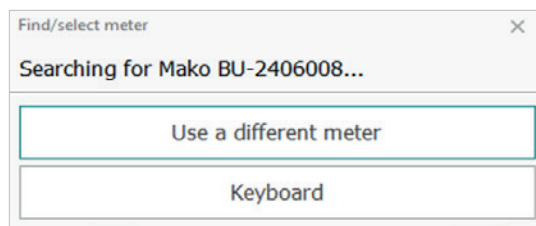
Mako and Piranha, together with Ocean version 4.5, now support the new Hologic Envision Mammography system. Four new calibrations, M32, M33, M34 and M35, have been added to Piranha and are fully supported in Ocean Next. Additionally, the AGD analysis has been updated to support these calibrations.



Improved startup speed and Bluetooth connection

The overall procedure for connecting to a meter has been enhanced. Pairing and Bluetooth connections are now significantly faster, making it easier to reconnect to the last used meter and to switch between different meters. Stability and reliability have also been greatly improved across all instruments, Mako, Piranha and Cobia.

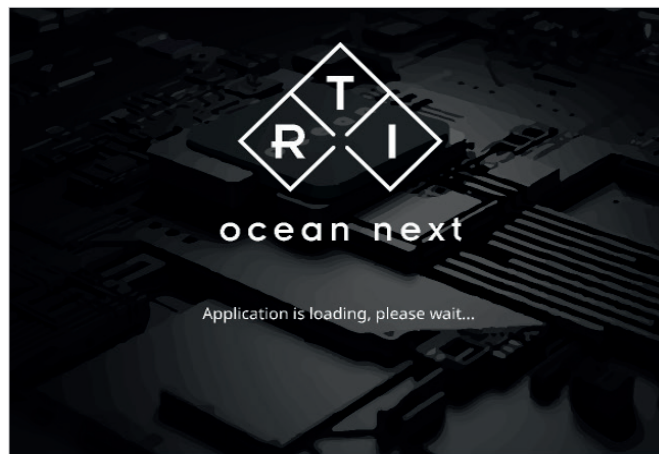
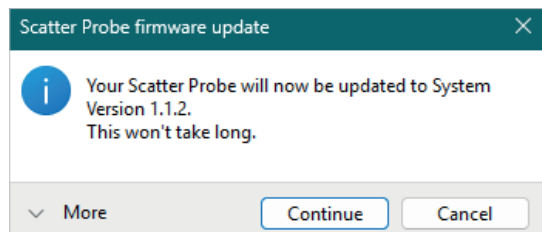
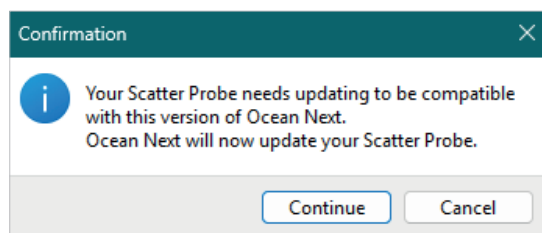
Ocean Next now starts more quickly, with a faster splash screen and a subtle progress bar that displays during startup.



Scatter Probe firmware update

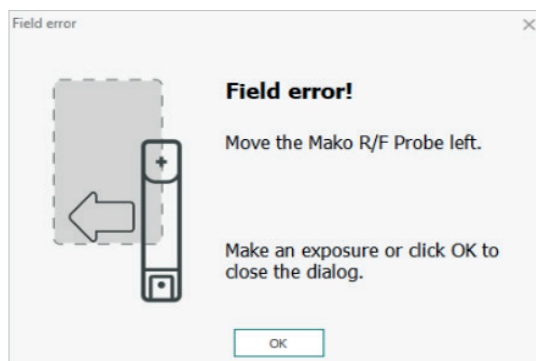
The Scatter Probe firmware can now be updated directly through Ocean Next. When the Scatter Probe connects, Ocean Next automatically installs the required firmware for its current version.

Note: Mako already had automatic firmware updates through Ocean Next, and this functionality now also applies to Scatter Probe.



Field position guide updated

If the Mako R/F, Mammo or Dental probe is not correctly irradiated, Ocean Next now displays graphical guidance to help the user adjust the probe position for a correct measurement. Previously, only the "Narrow field error" indication was available.



Choose your workflow – Freedom from fixed screens

Even though we recently launched the new app-powered Mako Display, Ocean Next remains the tool for advanced data analysis and full meter functionality.

The Mako Display offers a convenient, mobile way to view measurements, while Ocean Next continues to support all RTI meters, including the latest Mako updates.

Note that the Mako Display and Ocean Next cannot be used at the same time. This gives users the freedom to choose the workflow that best fits their situation, a streamlined display on the go or the complete analytical power of Ocean Next.



Improved guidance in Quick Check

Quick Check now provides more detailed graphics to guide the user when a required probe or module is not detected



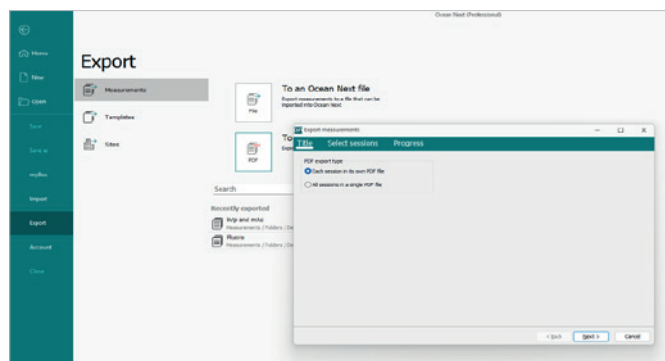
Auto-connect to meter

The auto-connect function has been improved. When Ocean Next starts, it automatically connects to the meter over Bluetooth or USB if a connection is available and the device is turned on or plugged in. For Bluetooth, it will use the previously saved device. This setting can be found under Meter Settings in Program Options.

Auto-connect is enabled by default when a customer installs Ocean Next. Combined with the improved Bluetooth handling, this update makes the workflow feel even more seamless and reduces the number of clicks needed.

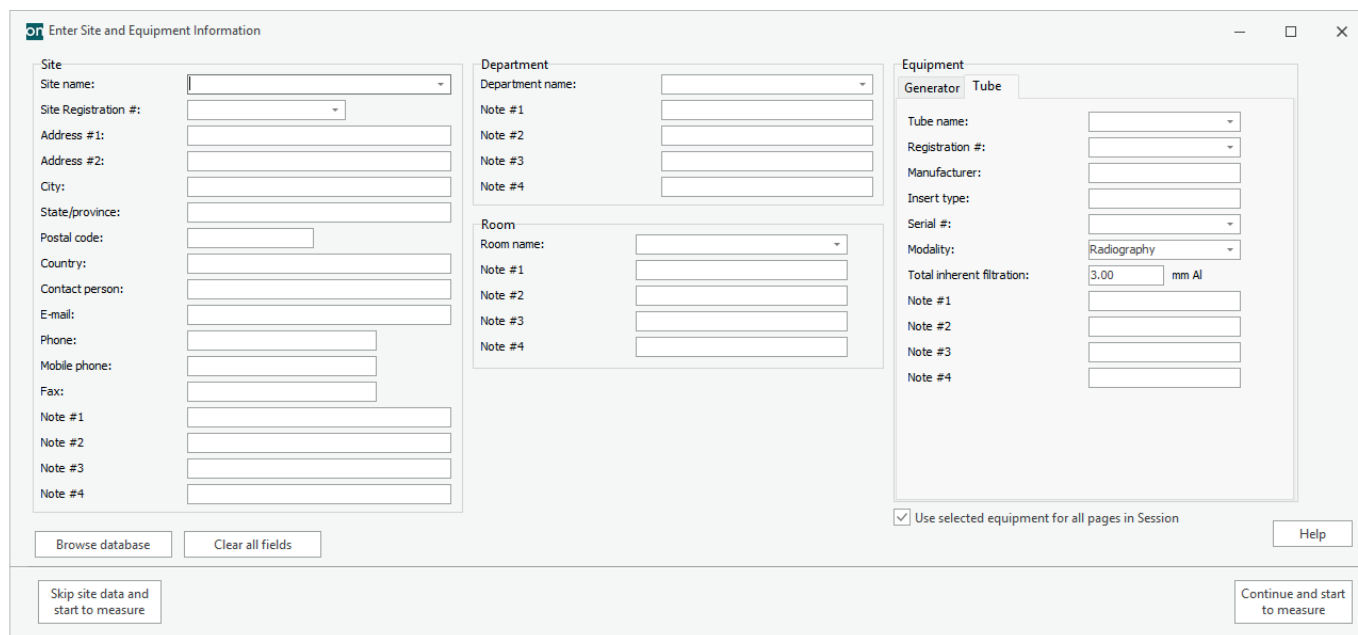
Create PDF files for multiple sessions:

You can now select a range of sessions and generate PDF files more flexibly. Ocean Next allows you to create a single PDF containing all selected sessions or individual PDF files, one for each session.



Improved workflow when starting a new measurement in Test View

You can now begin a new measurement by selecting an existing site from the database or by entering new site information directly, without needing to define it beforehand. When the measurement is saved, any newly entered site is automatically created in the database, and any updates to existing site information are applied. This removes the need to predefine facility, department, room and equipment before starting a measurement.



Other updates

Among many workflow improvements and optimizations, this Ocean Next release also contains

- Add a new report template to multiple documents:** Managing many report templates can be time consuming, since each template previously had to be opened, updated and saved one by one. It is now possible to select multiple templates, choose a report template and add it to all selected templates with a single click. This greatly streamlines the workflow when working with many templates.
- Better overview of imported and exported templates and measurements:** An MRU (Most Recently Used) list has been added to the Backstage Import and Export pages. This makes it much easier to locate recently imported documents: they are now immediately accessible without needing to search through various inboxes in the database tree.

System versions

Ocean Next 4.6 includes updates for the Mako (v1.6.4) and Scatter Probe (v1.1.2) systems. Instruments will automatically update to the latest firmware when connected to Ocean Next.